

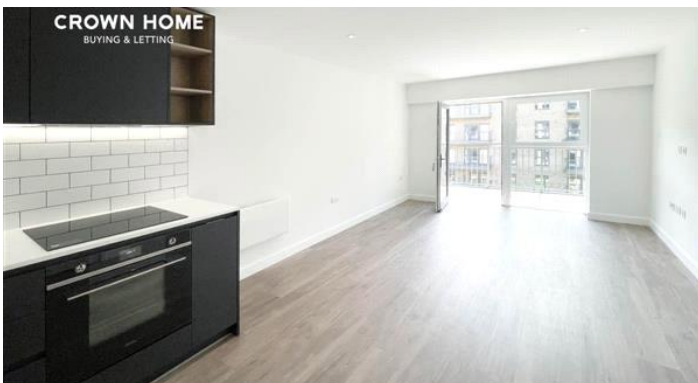
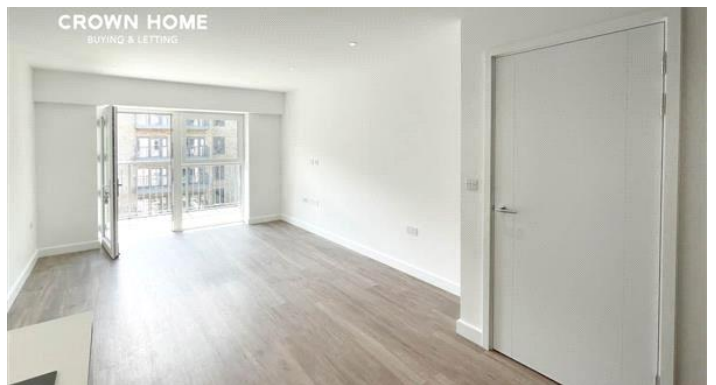
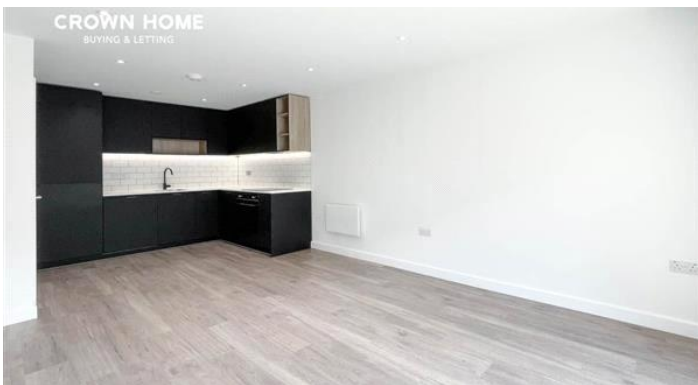
**Fairbank House,
Beaufort Park, NW9**

Apartment

£390,000

Estimated Service Charge:
£2,109 per year

Just a short walk to Colindale Station! A bright apartment featuring a balcony with serene garden views & luxury amenities, including a 24-hour concierge, gym, pool, sauna, and steam rooms.

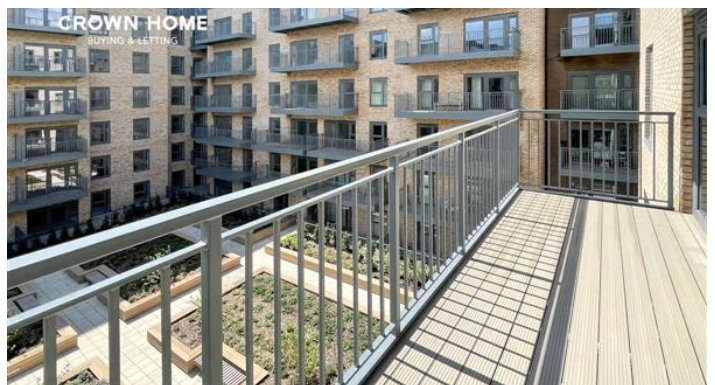




Prefer to communicate in Chinese? Connect with our China Desk on WeChat at CHBLSA1

This contemporary one-bedroom apartment, located in the sought-after Beaufort Park development in Colindale, NW9, combines modern style with comfortable living. The apartment features wood-effect flooring throughout the living room, hallway, and kitchen, enhancing its sleek, modern look. Floor-to-ceiling windows flood the space with natural light, and the open-plan living area extends onto a spacious balcony overlooking the serene communal garden.

The custom-designed kitchen is both stylish and functional, equipped with high-end appliances, including a Bosch fridge/freezer, SMEG oven, and a touch-control induction hob with an extractor fan. The durable, easy-to-clean worktop adds to



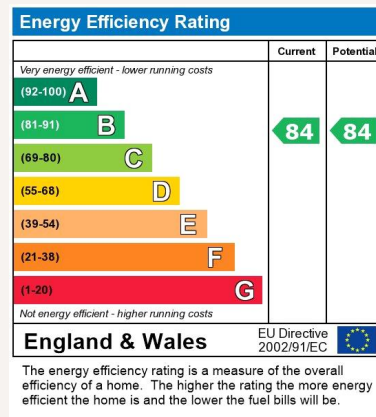


RESIDENTS' FACILITIES

- Private balcony
- Floor-to-ceiling windows
- 24-hour Concierge
- Balcony
- Residents' gym
- Residents' pool, sauna & steam rooms
- On-site Tesco express
- Communal gardens

Tenure
Leasehold

EPC Rating
EPC Rating: B



Cherise Rodriguez

cherise@chbl.uk

+44 (0) 20 7903 6881

Digital Marketing Assistant

International House, 1 St. Katharines Way, London E1W 1UN